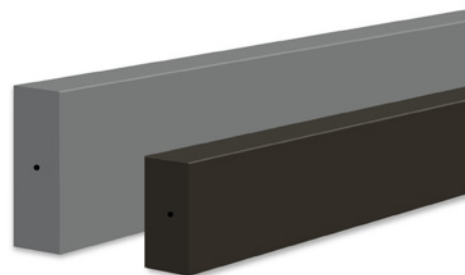
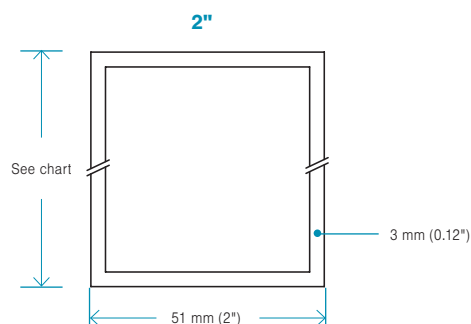


TECHNICAL DATA SHEET

Aluminum siding – MAE Series

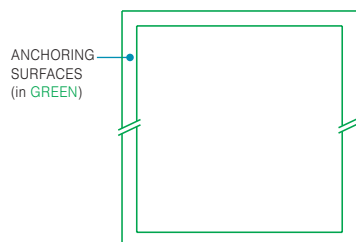
# Architectural battens solid color

STANDARD THICKNESS



MOUNTING DETAILS

Fixing to walls, floors or ceilings is possible over the entire surface of the solid color extruded batten. **No restricted areas.**



CODE	THICKNESS	WIDTH	LENGTH	BATTEN THICKNESS & WEIGHT CHART (PER LI. FT.)
AEL2412TEI	2" (51 mm)	4" (102 mm)	12' (3.66 m)	1.685 lb / 0.764 kg
AEL2416TEI	2" (51 mm)	4" (102 mm)	16' (4.88 m)	1.685 lb / 0.764 kg
AEL2612TEI	2" (51 mm)	6" (152 mm)	12' (3.66 m)	2.190 lb / 0.99 kg
AEL2616TEI	2" (51 mm)	6" (152 mm)	16' (4.88 m)	2.190 lb / 0.99 kg
AEL2812TEI	2" (51 mm)	8" (203 mm)	12' (3.66 m)	2.867 lb / 1.30 kg
AEL2816TEI	2" (51 mm)	8" (203 mm)	16' (4.88 m)	2.867 lb / 1.30 kg

## General Specifications

MODEL

See chart

LENGTH\*

16 ft | 4.8 m - 12 ft | 3.6 m

In the case of factory-assembled battens, or when adding end caps, please note that the thickness of the end cap (0.125" / 3 mm) is added to the length of the extrusion.

PRODUCT

Aluminum Battens

MATERIAL

6063-T5 aluminum

WEIGHT

See chart

TESTS AND CERTIFICATIONS\*

- ASTM E84 – Fire resistance
- CAN/ULC-S102 – Fire resistance
- CAN/ULC-S114 – Fire resistance
- CAN/ULC-S135 – Fire resistance
- AAMA 2604 – Finish performance (AAMA 2605 available)

\* Nominal lengths. Actual lengths: 16'-0" ± 0.1875" (4.8m ± 4.7mm) / 12'-0" ± 0.1875" (3.6m ± 4.7mm).  
IMPORTANT: Always check local building regulations before installing Maibec battens.

\* VISIT [ALU.MAIBEC.COM](http://ALU.MAIBEC.COM) FOR FULL DETAILS  
© COPYRIGHT - MAIBEC INC. SEPTEMBER 2025